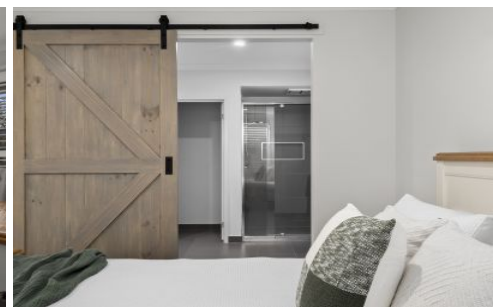





AVENUE FIVE



16 Jurana Crescent Mount Duneed VIC

4  2  2 

Ideally positioned within easy reach of all that Mount Duneed has on offer, this location and home will leave you wanting nothing extra. The popular 9 Grams Café is a short stroll away, along with public transport and the playground a stone's throw away. The morning school run will be a breeze with Mirriposa P.S. also within walking distance. A variety of sporting grounds are close by, and access to the Melbourne ring road has never been more convenient.

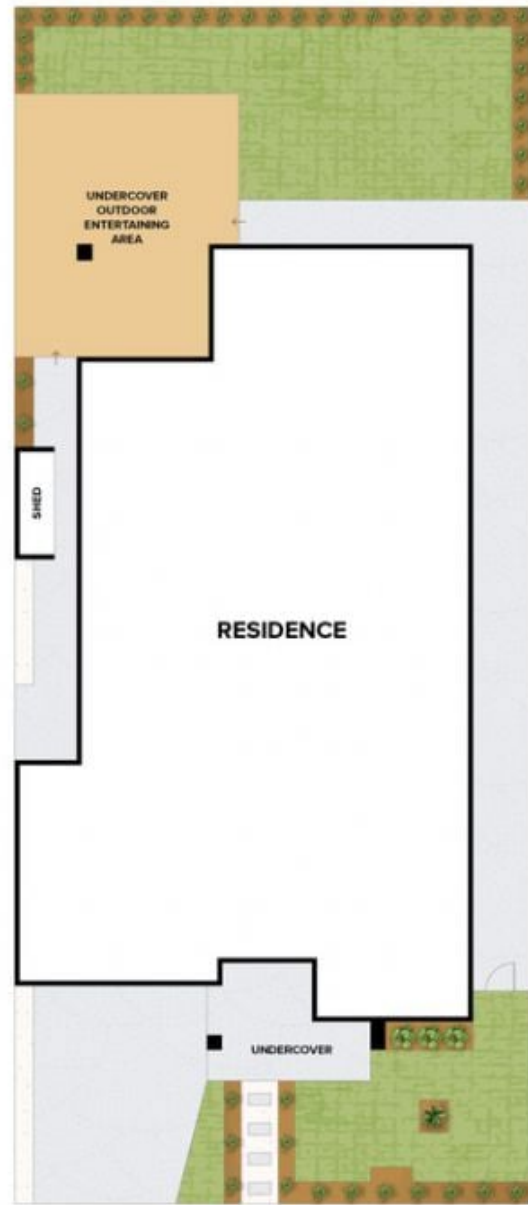
High ceilings and timber-look flooring enhance the neutral interiors, which invite you to add a splash of your favourite colour to make this home your own. Northern light sweeps through the open plan living/dining/kitchen zone with a custom study nook to make working from home a breeze.

The kitchen will delight with waterfall stone benchtops, an undermount sink and breakfast bar. The walk in pantry

Price : Contact Agent
Building Size : 27 Sqrs
Land Size : 448 sqm
View : <https://www.avenuefive.com.au/sale/vic/geelong-district/mount-duneed/residential/house/8001893>



Sam Parsons
5241 6968



16 JURANA CRESCENT, MOUNT DUNEED

THE ABOVE PLAN IS AN ARTIST'S IMPRESSION ONLY, IT INCLUDES ELEMENTS THAT ARE FOR DISPLAY PURPOSES ONLY AND MAY NOT BE TO SCALE. LANDSCAPING SHOWN IS INDICATIVE ONLY. DIMENSIONS ARE APPROXIMATE.

AVENUE FIVE