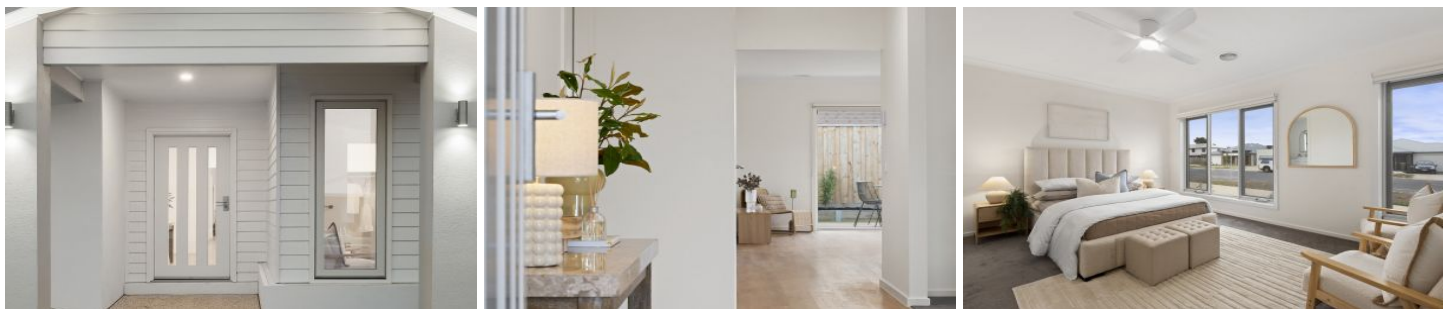



# AVENUE FIVE



**37 Cornflower Way Mount Duneed VIC**

4  2  2 

Escape the ordinary and embrace this coastal lifestyle dream with this stunning modern masterpiece nestled in the heart of Mount Duneed. Presented as brand new and perfectly positioned to take advantage of local parklands, shopping centres, and beaches, this architecturally designed home offers the ultimate blend of luxury and relaxation.

Step inside to discover a meticulously designed interior that seamlessly blends contemporary elegance with coastal charm. Bright and airy, the wide open-plan living spaces are bathed in natural light from multiple stacker doors and large windows, taking full advantage of the north and west orientations of the corner block. The large kitchen features sleek 900mm s/s appliances, stone benchtops with a waterfall end, and a sizeable walk-in pantry.

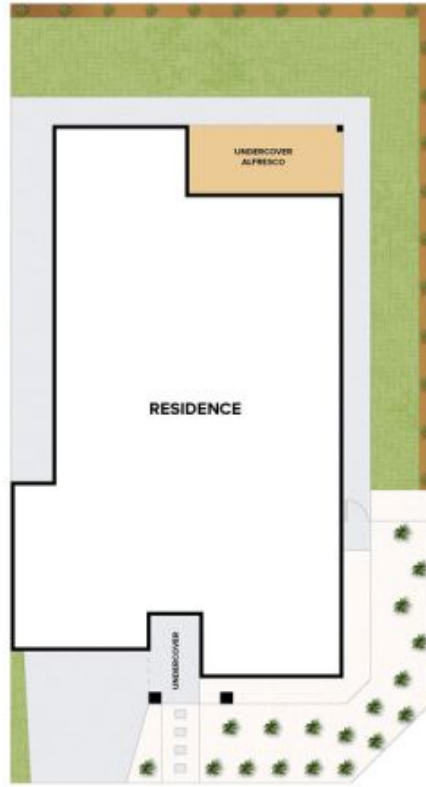
**Building Size** : 27 Sqrs  
**Land Size** : 448 sqm  
**View** : <https://www.avenuefive.com.au/lease/vic/geelong-district/mount-duneed/residential/house/7991794>



**Kat Smith**  
5241 6968



**Elisha Jackman**  
5241 6968



**37 CORNFLOWER WAY, MOUNT DUNEED**

THE ABOVE PLAN IS AN ARTIST'S IMPRESSION ONLY, IT INCLUDES ELEMENTS THAT ARE FOR DISPLAY PURPOSES ONLY AND MAY NOT BE TO SCALE. LANDSCAPING SHOWN IS INDICATIVE ONLY. DIMENSIONS ARE APPROXIMATE.

**AVENUE FIVE**