

# AVENUE FIVE



**11/211-213 Boundary Road Whittington VIC**

2 1 1

Nestled on approximately 314m<sup>2</sup> of prime land, this charming 2-bedroom, 1-bathroom unit offers the perfect blend of comfort, convenience, and style.

Step inside to discover a spacious living and dining area seamlessly connected to a well-appointed kitchen, boasting a 600mm Chef oven and a 600mm Westinghouse cooktop. Whether you're cooking up a storm or entertaining guests, this kitchen is sure to impress.

Enjoy year-round comfort with split system heating/cooling located in the living area, ensuring you're cozy in winter and cool in summer.

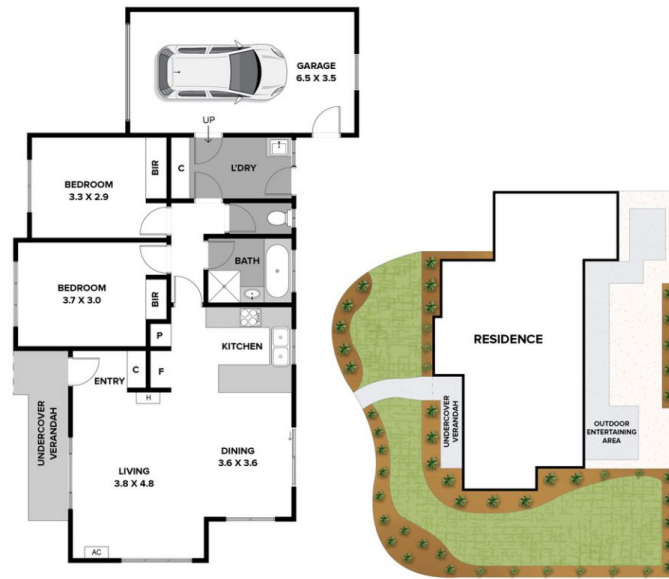
Both bedrooms come complete with built-in robes, offering ample storage space for all your belongings. Plus, the single lock-up garage with remote access provides secure

**Price** : \$ 445,000  
**Land Size** : 314 sqm  
**View** : <https://www.avenuefive.com.au/sale/vic/geelong-district/whittington/residential/unit/7972472>



**Sam Parsons**  
**5241 6968**

<https://www.avenuefive.com.au>



# **11/211-213 BOUNDARY ROAD, WHITTINGTON**

THE ABOVE PLAN IS AN ARTIST'S IMPRESSION ONLY. IT INCLUDES ELEMENTS THAT ARE FOR DISPLAY PURPOSES ONLY AND MAY NOT BE TO SCALE.  
LANDSCAPING SHOWN IS INDICATIVE ONLY. DIMENSIONS ARE APPROXIMATE.

## **AVENUE FIVE**