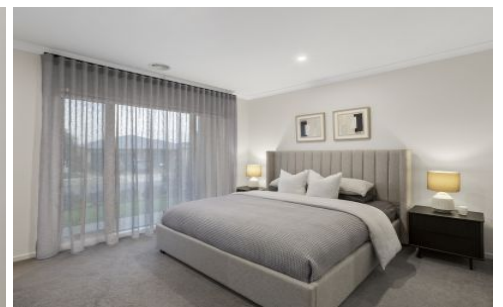


AVENUE FIVE



15 Nacelle Street Mount Duneed VIC

4  2  2 

Step into luxury with this stunning, light filled single-story residence nestled on the edge of Mt Duneed. This larger than average 4-bedroom home offers a truly functional layout, catering for the family lifestyle and creating space and comfort for everyone.

The additional upgrades in this home are what sets it apart, as you enter you'll be greeted by the grandeur of high ceilings that create an airy and expansive atmosphere across the Kitchen / Living / Dining space. The luxurious hydronic heating ensures warmth and coziness during chilly evenings, and the refrigerated cooling ensures you're nice and cool even on the hottest of days, every corner of this home is a sanctuary of comfort.

The heart of the home lies in its large, north facing living and kitchen area, filled with light all day long, this premium

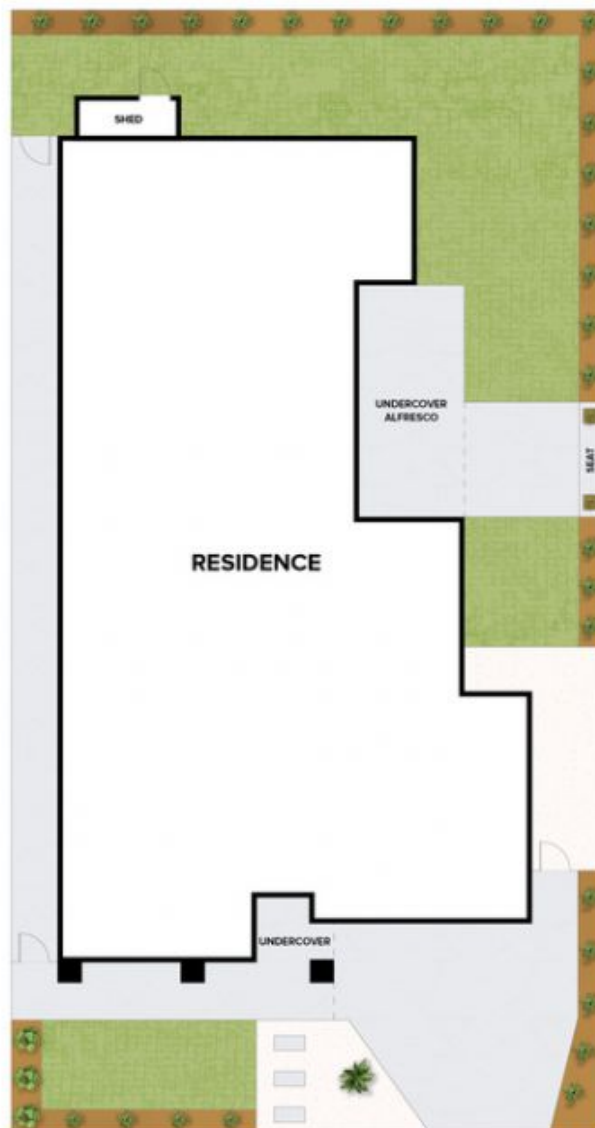
Price : \$ 850,000
Building Size : 29 Sqrs
Land Size : 480 sqm
View : <https://www.avenuefive.com.au/sale/vic/geelong-district/mount-duneed/residential/house/7972147>



Sam Parsons
5241 6968



Hayley Clark
5241 6968



15 NACELLE STREET, MOUNT DUNEED

THE ABOVE PLAN IS AN ARTIST'S IMPRESSION ONLY, IT INCLUDES ELEMENTS THAT ARE FOR DISPLAY PURPOSES ONLY AND MAY NOT BE TO SCALE. LANDSCAPING SHOWN IS INDICATIVE ONLY. DIMENSIONS ARE APPROXIMATE.

AVENUE FIVE