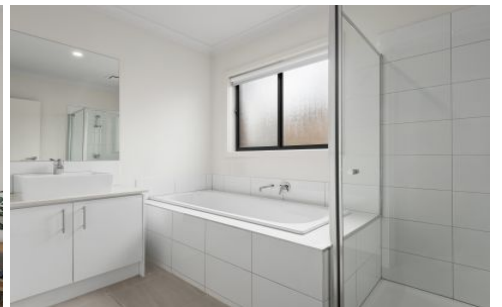
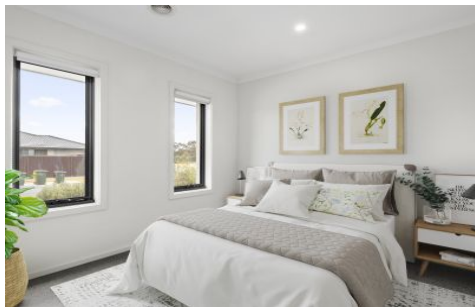


# AVENUE FIVE



**27 Scullin Road Charlemont VIC**

4 2 2

Experience the liberating lifestyle you've envisioned in this beautifully crafted residence. Constructed by Snowdon Homes and occupying approximately 400m2, this home invites you to simply move in and relish the surroundings. Modern interiors are accentuated by pristine white walls, complemented by quality stone benchtops in both the kitchen and bathrooms.

The seamless flow of the open plan living area extends to a covered alfresco, creating an inviting space to unwind. Nestled towards the rear, the Master bedroom offers a delightful retreat with direct access to the alfresco. Three additional bedrooms showcase built-in robes, while the home office provides flexibility as a children's play area or extra rumpus room.

Strategically located in the emerging community of

**Price** : \$620,000 - \$650,000  
**Land Size** : 400 sqm  
**View** : <https://www.avenuefive.com.au/sale/vic/geelong-district/charlemont/residential/house/7961058>



**Haxhi Abedin**  
**0416227524**

<https://www.avenuefive.com.au>



27 SCULLIN ROAD, CHARLEMONT

THE ABOVE PLAN IS AN ARTIST'S IMPRESSION ONLY. IT INCLUDES ELEMENTS THAT ARE FOR DISPLAY PURPOSES ONLY AND MAY NOT BE TO SCALE.  
LANDSCAPING SHOWN IS INDICATIVE ONLY. DIMENSIONS ARE APPROXIMATE.

AVENUE FIVE