

AVENUE FIVE



7 Daintree Drive Winchelsea VIC

4  2  2 

Nestled within the picturesque landscape of Winchelsea, 7 Daintree Drive stands as an epitome of contemporary elegance. The property spans across a generous land area, providing ample space for relaxation, recreation, and entertainment. Surrounded by lush greenery and serene ambiance, this residence offers a retreat from the hustle and bustle of city life.

This home consist of 3 large bedrooms with the fourth you have the option to use as a bedroom or study, 1 bathroom with built-in bath. The open plan living/dining which looks out to the beautiful backyard with lush green lawns and ample space for entraining family & friends.

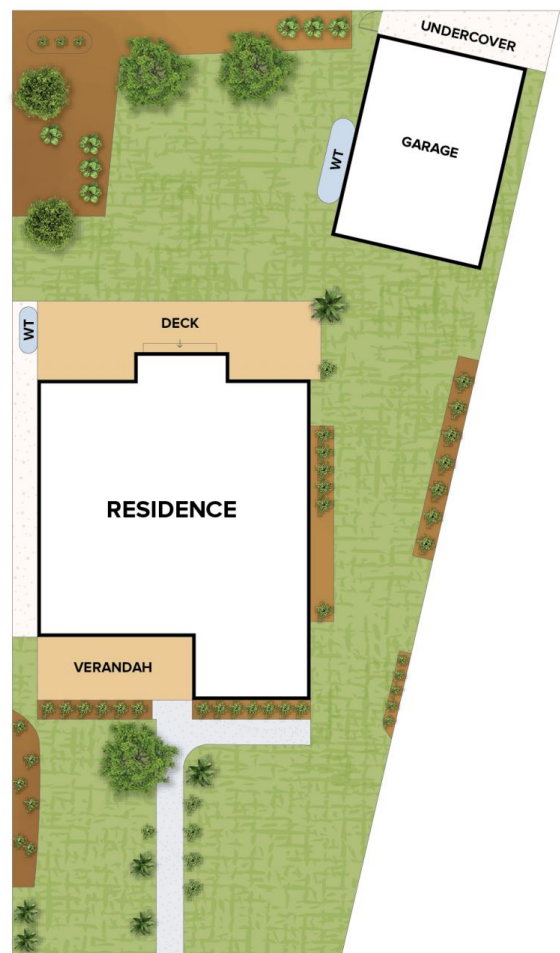
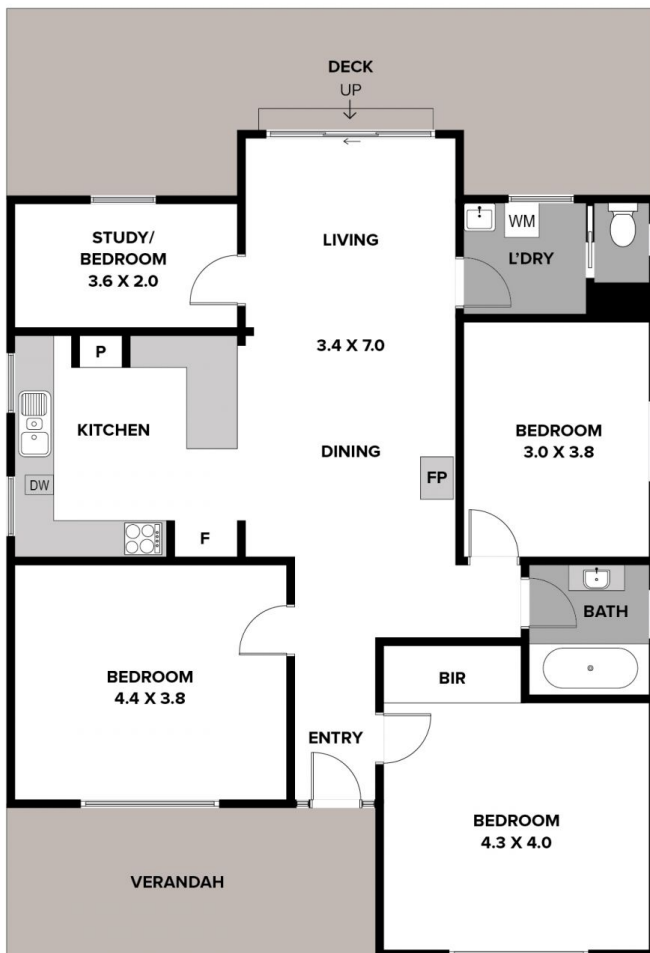
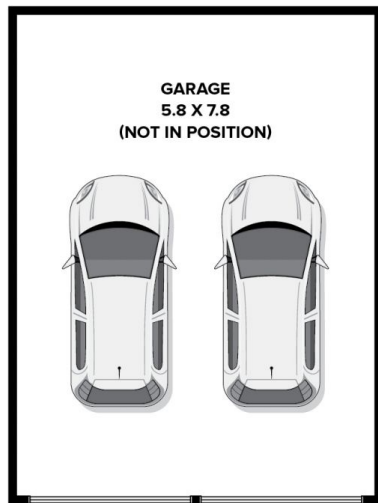
The home is equipped with a good sizeable kitchen with plenty of bench space, stainless steel appliances, plus a breakfast bench which can be ideal for extra seating when

Price : \$625,000 - \$675,000

View : <https://www.avenuefive.com.au/sale/vic/great-ocean-rd-otway-ranges/winchelsea/residential/house/7945191>



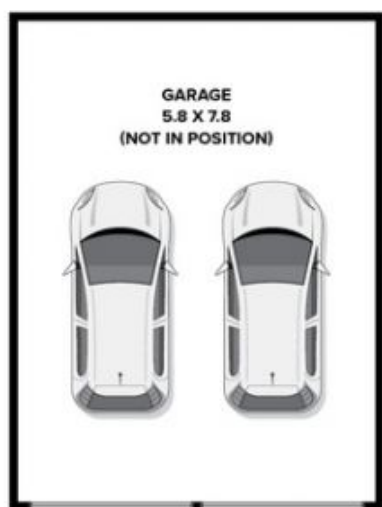
Sam Parsons
5241 6968



7 DAINTREE DRIVE, WINCHELSEA

THE ABOVE PLAN IS AN ARTIST'S IMPRESSION ONLY, IT INCLUDES ELEMENTS THAT ARE FOR DISPLAY PURPOSES ONLY AND MAY NOT BE TO SCALE.
LANDSCAPING SHOWN IS INDICATIVE ONLY. DIMENSIONS ARE APPROXIMATE.

AVENUE FIVE



7 DAINTREE DRIVE, WINCHELSEA

THE ABOVE PLAN IS AN ARTIST'S IMPRESSION ONLY, IT INCLUDES ELEMENTS THAT ARE FOR DISPLAY PURPOSES ONLY AND MAY NOT BE TO SCALE. LANDSCAPING SHOWN IS INDICATIVE ONLY. DIMENSIONS ARE APPROXIMATE.

AVENUE FIVE