

AVENUE FIVE



14 Chateau Way Mount Duneed VIC

4  2  2 

Welcome to 14 Chateau Way, where sophistication meets comfort in this stunning Urban Edge Design home nestled within the heart of Mount Duneed. Boasting a blend of contemporary style and practicality, this 4-bedroom, 2-bathroom residence offers a lifestyle of sheer luxury.

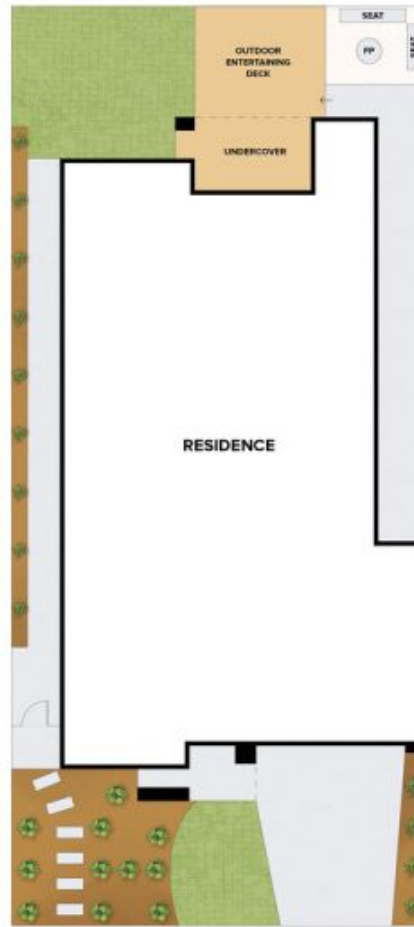
Land Size : 350 sqm
View : <https://www.avenuefive.com.au/lease/vic/geelong-district/mount-duneed/residential/house/7942372>

Step inside to discover a haven of elegance, featuring a spacious living and dining area bathed in natural light that invites the outdoors in. Enjoy year-round comfort with ducted heating, while the allure of timber laminate floorboards creates a warm and inviting ambiance throughout.

The heart of the home lies in the gourmet kitchen, equipped with 900mm stainless steel appliances and sleek stone benchtops that complement its modern design. Whether entertaining guests or crafting culinary delights,



Elisha Jackman
5241 6968



14 CHATEAU WAY, MOUNT DUNEED

THE ABOVE PLAN IS AN ARTIST'S IMPRESSION ONLY. IT INCLUDES ELEMENTS THAT ARE FOR DISPLAY PURPOSES ONLY AND MAY NOT BE TO SCALE. LANDSCAPING SHOWN IS INDICATIVE ONLY. DIMENSIONS ARE APPROXIMATE.

AVENUE FIVE