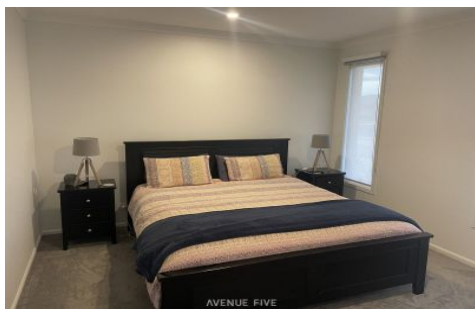


AVENUE FIVE



324 Boundary Road Mount Duneed VIC

4  2  2 

Situated in the award-winning Armstrong estate, with access to Club Armstrong, this home and location is sure to impress, just a short stroll from playgrounds and a future secondary school, 15 minutes to Torquay/ Surf coast Beaches and 2 minutes to Armstrong Creek Town Centre. Take advantage of this near new home.

Building Size : 25 Sqrs
Land Size : 396 sqm
View : <https://www.avenuefive.com.au/lease/vic/geelong-district/mount-duneed/residential/house/7921901>

The Porter Davis Monarch 23, is a four-bedroom home, with two bathrooms, two living areas and grand alfresco.

Styled Interior
Evaporative cooling & ducted heating
20mm Silestone benchtops to kitchen, bathroom and ensuite
Coloured concrete driveway and path to door
2590mm high ceilings
Floor coverings to entire house



Elisha Jackman
5241 6968

