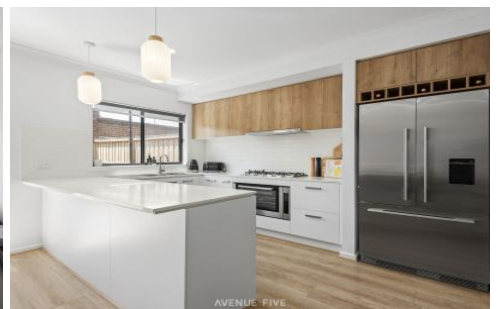


# AVENUE FIVE



## 12 Kauri Walk Mount Duneed VIC

3  2  2 

This stunning townhouse is perfectly situated across from the serene Tempo Park, offering you the ideal blend of modern living and natural beauty. With 2 spacious living areas, this townhouse provides ample space for you to relax, entertain, and create lasting memories.

Step inside and be captivated by the open-concept design that seamlessly connects the living, dining, and kitchen areas, creating a warm and inviting atmosphere. The living areas are flooded with natural light, creating a cheerful and vibrant ambiance throughout the home.

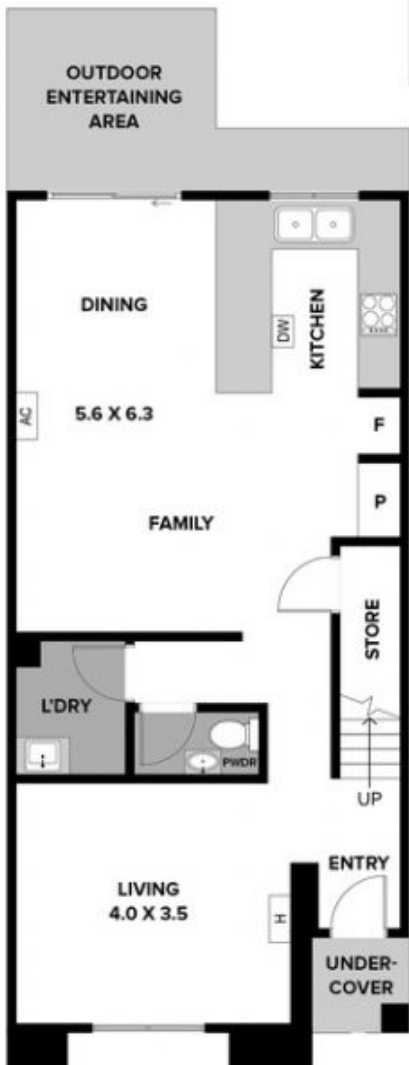
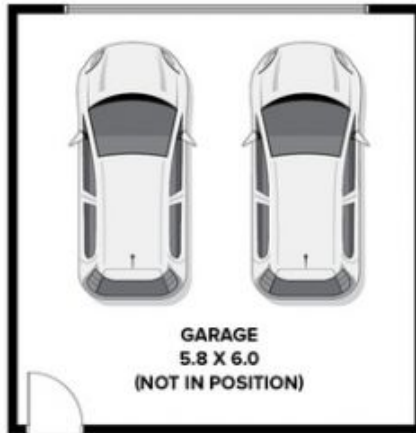
The well-appointed kitchen is a culinary delight, boasting sleek stone countertops, modern appliances, and plenty of storage space for all your cooking needs. The adjacent dining area is perfect for hosting intimate gatherings or enjoying family meals.

**Price** : \$ 605,000

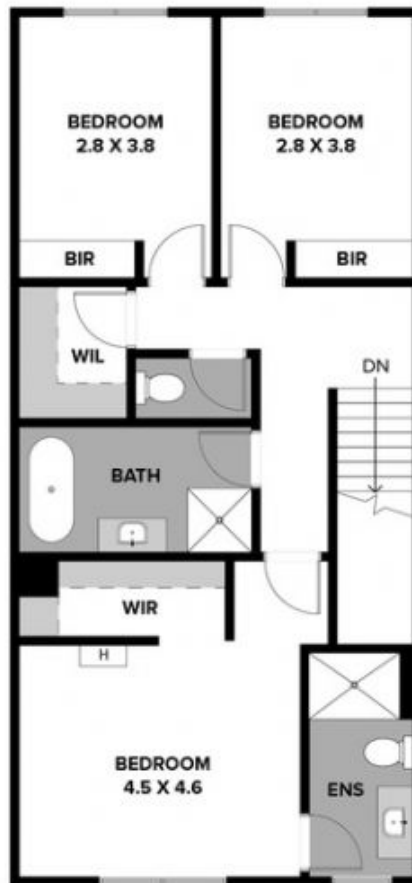
**View** : <https://www.avenuefive.com.au/sale/vic/geelong-district/mount-duneed/residential/townhouse/7872090>



**Sam Parsons**  
5241 6968



GROUND FLOOR



FIRST FLOOR

## 12 KAURI WALK, MOUNT DUNEED

THE ABOVE PLAN IS AN ARTIST'S IMPRESSION ONLY, IT INCLUDES ELEMENTS THAT ARE FOR DISPLAY PURPOSES ONLY AND MAY NOT BE TO SCALE. LANDSCAPING SHOWN IS INDICATIVE ONLY. DIMENSIONS ARE APPROXIMATE.

## AVENUE FIVE