

AVENUE FIVE



5 Edwin Street Charlemont VIC

4  **2**  **2** 

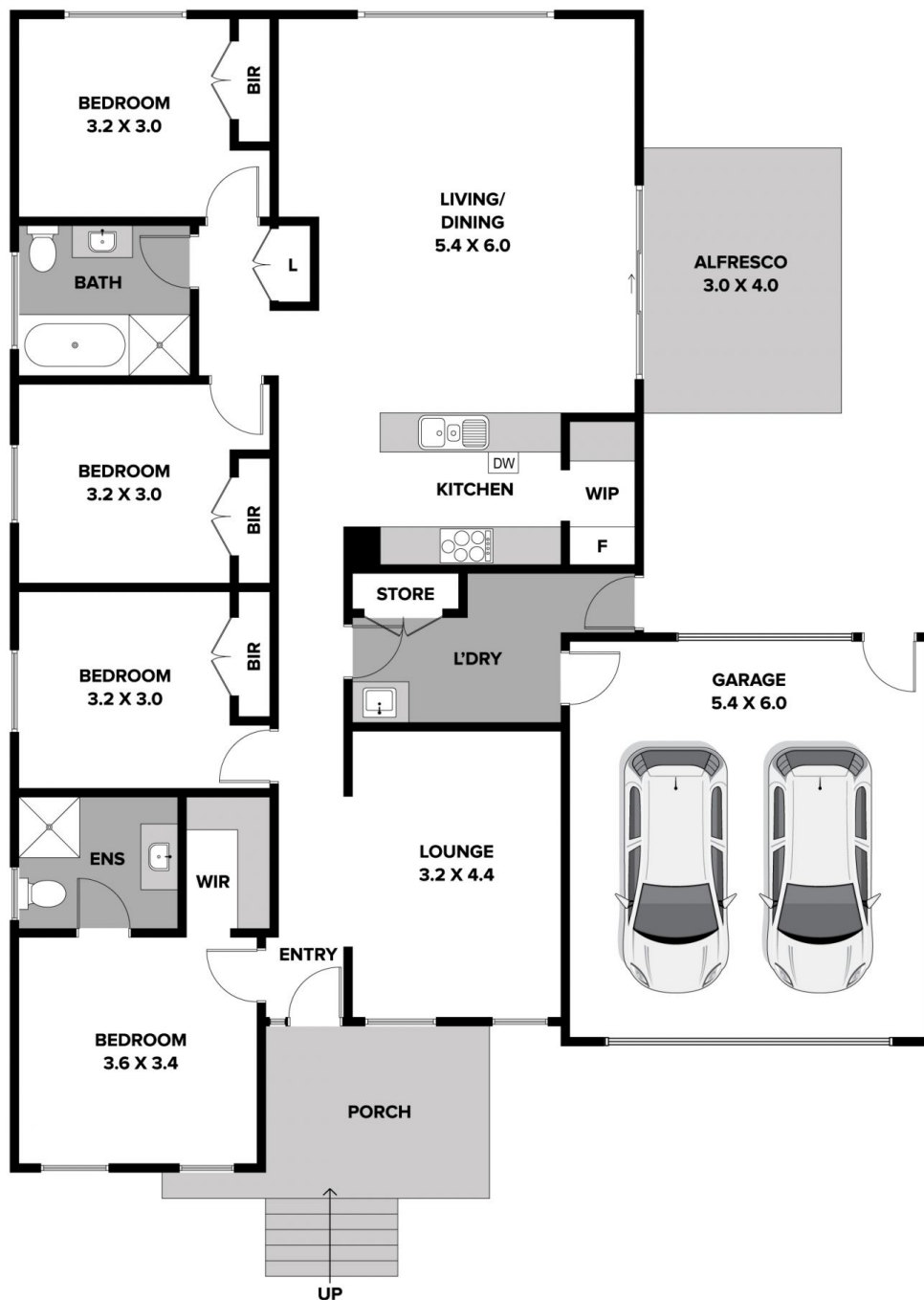
Beautifully constructed and thoughtfully designed, this well-appointed 4 bedroom home is perfect for the entertainer with its 2 spacious living zones and outdoor alfresco. The striking façade offers a sense of grandeur whilst the double car garage with drive through access offers those with trailers peace of mind.

This growing community places you only moments away from everyday conveniences. The local playground is a short stroll from your front door, while nearby schools include Iona College Geelong and Catherines of Sienna. Marshall Train Station is close by for Melbourne commuters, while Warralily Village and the Armstrong Creek Town Centre are within easy reach. With easy access to the Geelong CBD, Barwon Heads and Torquay, what's not to love about this locale.

Price : \$ 760,000
Land Size : 383 sqm
View : <https://www.avenuefive.com.au/sale/vic/geelong-district/charlemont/residential/house/7154538>



Haxhi Abedin
0416227524



5 EDWIN STREET, CHARLEMONT

THE ABOVE PLAN IS AN ARTIST'S IMPRESSION ONLY, IT INCLUDES ELEMENTS THAT ARE FOR DISPLAY PURPOSES ONLY AND MAY NOT BE TO SCALE.
LANDSCAPING SHOWN IS INDICATIVE ONLY. DIMENSIONS ARE APPROXIMATE.

AVENUE FIVE