

# AVENUE FIVE



## 16 Eminence Street Mount Duneed VIC

3  2  2 

Located in the heart of Mount Duneed, 16 Eminence Street, offers a low maintenance lifestyle for first home buyers and downsizers or an ideal opportunity for investors. The home is conveniently located only minutes from shopping conveniences at Armstrong Creek Town Centre and the future Mount Duneed Village. If you do need to venture further, it's only a 15-minute drive to Geelong in one direction and Torquay in another, making Mount Duneed an increasingly sought after location.

Set on a corner block of approx. 287m2 this low maintenance, three-bedroom home will appeal to many, from first-home-buyers, investors and downsizers. The freshly planted front garden helps to promote the home's facade, with feature render and weatherboard panelling.

Inside, the master bedroom features a walk-in wardrobe

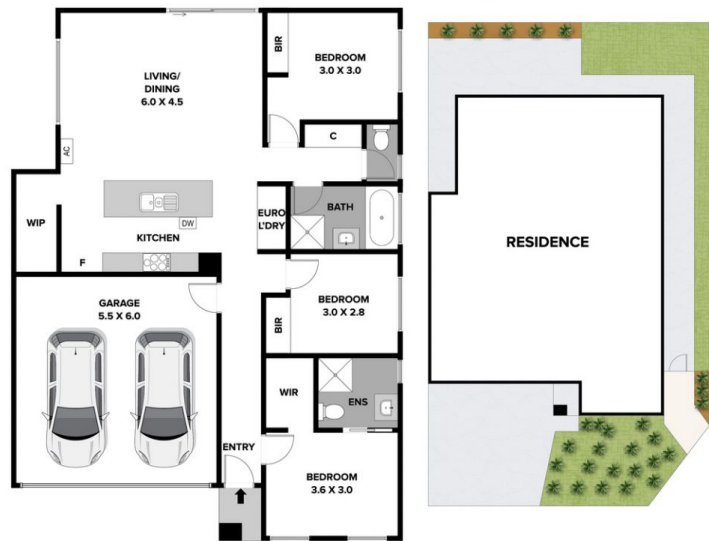
**Price** : \$ 655,000  
**Land Size** : 287 sqm  
**View** : <https://www.avenuefive.com.au/sale/vic/geelong-district/mount-duneed/residential/house/6949210>



**Sam Parsons**  
5241 6968



**Luke Eustace**  
5241 6968



APPROX HOUSE AREA 135M<sup>2</sup>  
APPROX LAND AREA 286M<sup>2</sup>

16 EMINENCE STREET, MT DUNEED

AVENUE FIVE