

AVENUE FIVE



20 Latitude Street Mount Duneed VIC

4 2 2

Located just minutes from schools, parks and shopping conveniences at Armstrong Town Centre and the future Mount Duneed Village, 20 Latitude Street offers much in the way of family living. Mount Duneed continues to provide continued appeal to families with its proximity to the conveniences of Geelong City and the beaches and recreation of Torquay and the Surf Coast.

Making the most of its 400m² (approx.) block, this home offers four well provisioned bedrooms - the master with ensuite and walk-in robe is well proportioned and private with a split-system aircon to keep things cool in summer. The other three bedrooms are well lit and well provisioned with built-in robes. A second split system in the main living area keeps the rest of the home cool with ducted heating doing the opposite job during the cooler months of the year.

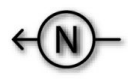
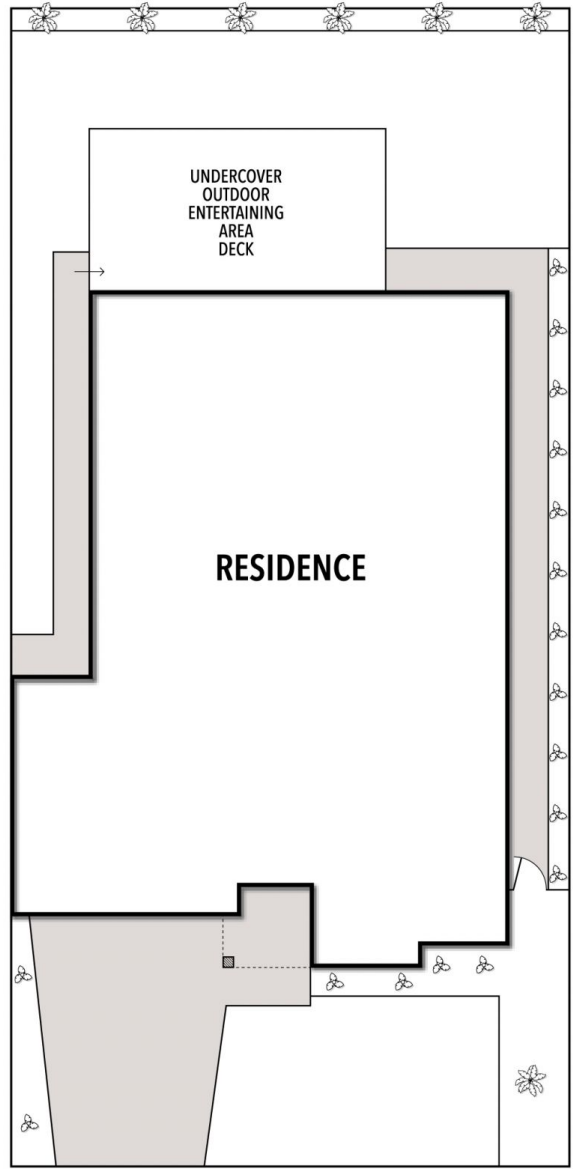
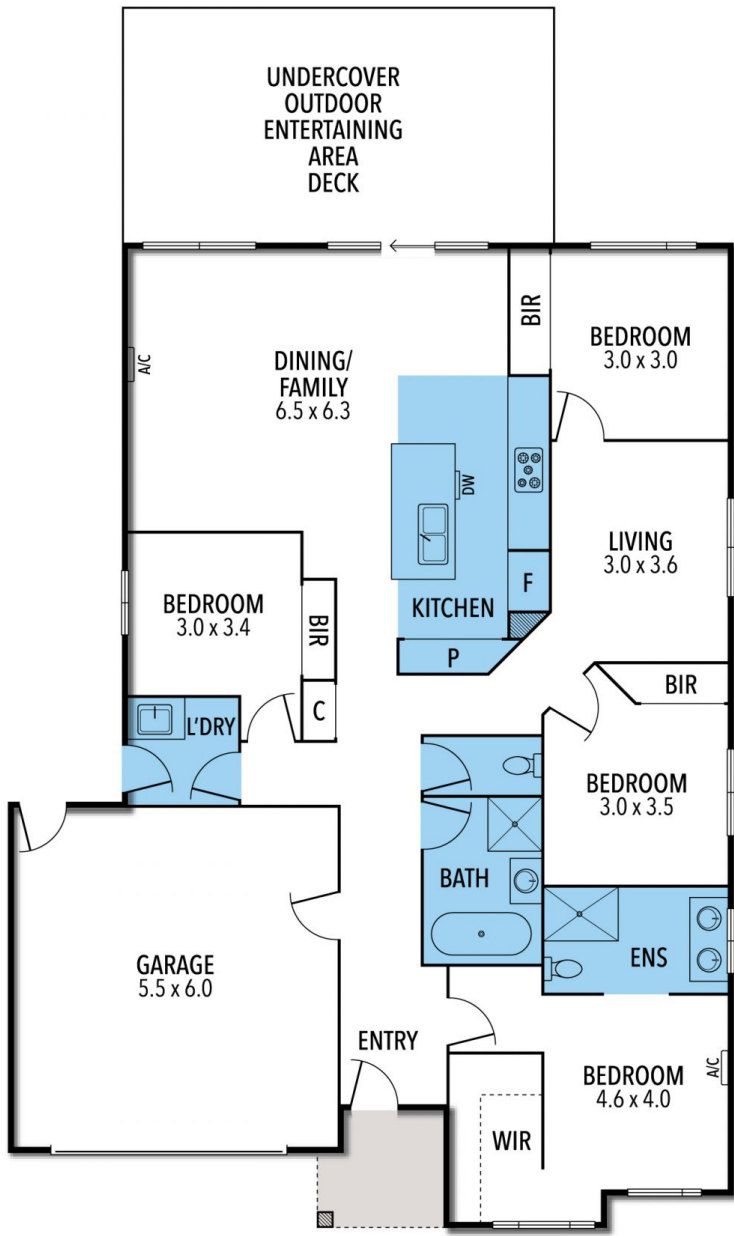
Price : \$ 715,000
Building Size : 22 sqm
Land Size : 392 sqm
View : <https://www.avenuefive.com.au/sale/vic/geelong-district/mount-duneed/residential/house/6852401>



Sam Parsons
5241 6968



Luke Eustace
5241 6968



THE ABOVE PLAN IS AN ARTIST'S IMPRESSION ONLY, IT INCLUDES ELEMENTS THAT ARE FOR DISPLAY PURPOSES ONLY AND MAY NOT BE TO SCALE. LANDSCAPING SHOWN IS INDICATIVE ONLY. DIMENSIONS ARE APPROXIMATE.