

AVENUE FIVE



15 Concorde Street Mount Duneed VIC

4 2 2

Just an arms reach from the ever-growing Armstrong Creek town Centre, 15 Concorde Street in Mount Duneed is comfortable family living at its finest! Located on a generous 512m² allotment, this property is perfect for those wanting to upgrade their lifestyle and enjoy all the perks this wonderful suburb has to offer.

Fixed with a walk-in pantry, stone bench-tops, overheads and 900m appliances - the open-plan kitchen, family and dining area creates a spacious and relaxed atmosphere. This faces out to the beautifully maintained, north-facing yard featuring a decked undercover alfresco and charming high hedges ideal for privacy and perfect for entertaining!

The wide hallway, high ceilings and timber floorboards make this property a styling dream with a variety of flexible configurations and an abundance of natural light flooding

Price : \$ 865,000
Building Size : 29 sqm
Land Size : 512 sqm
View : <https://www.avenuefive.com.au/sale/vic/geelong-district/mount-duneed/residential/house/6849515>



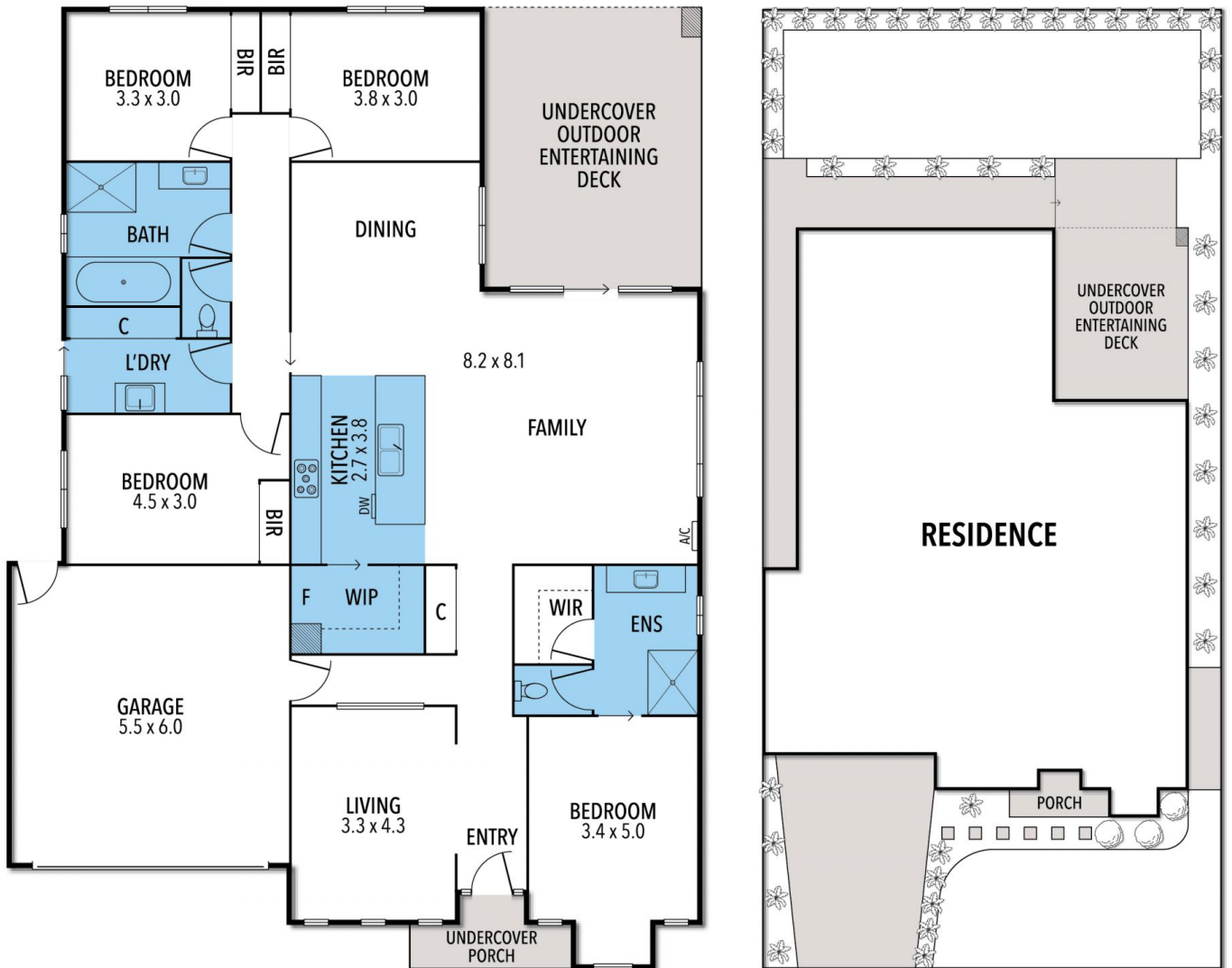
Sam Parsons
5241 6968



Hayley O'Shannessy
5241 6968

<https://www.avenuefive.com.au>

15 CONCORDE STREET, MOUNT DUNEED



THE ABOVE PLAN IS AN ARTIST'S IMPRESSION ONLY, IT INCLUDES ELEMENTS THAT ARE FOR DISPLAY PURPOSES ONLY AND MAY NOT BE TO SCALE. LANDSCAPING SHOWN IS INDICATIVE ONLY. DIMENSIONS ARE APPROXIMATE.