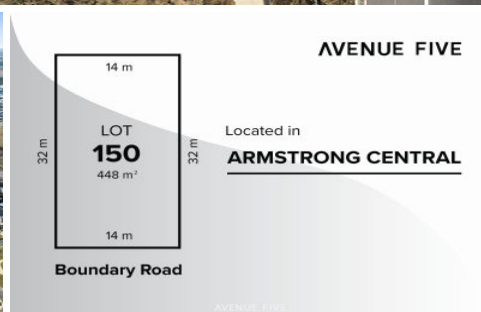
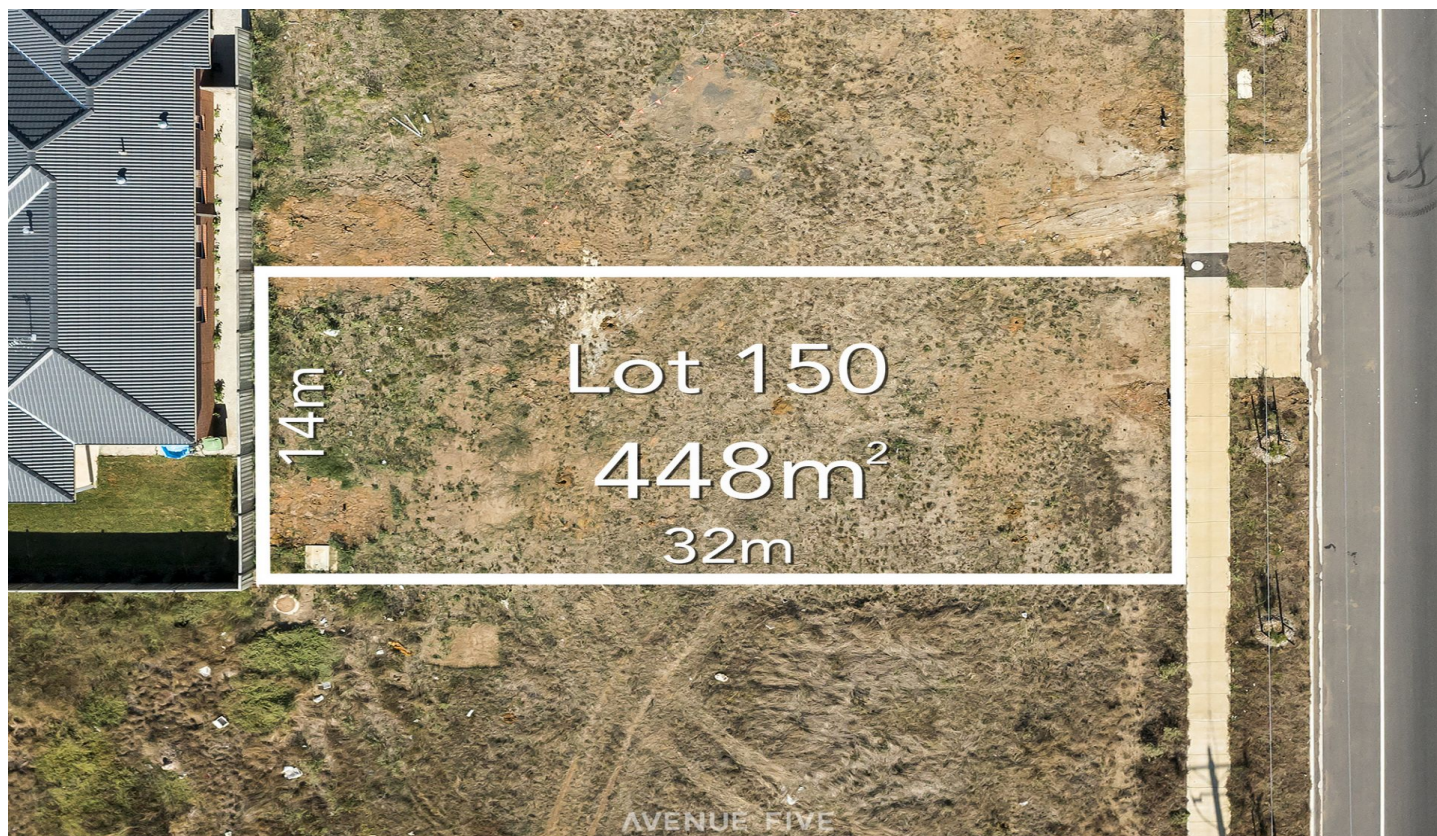


AVENUE FIVE



150/ Boundary Road Mount Duneed VIC

Live close to it all in Armstrong Central where everything you need is on your doorstep. Tucked away in the heart of the Armstrong Creek this boutique community is fast becoming a favoured location for new home owners. Enjoy being close to wide open spaces, parks, walking & bike tracks, sporting ovals all while living a short drive to the famous Surf Coast beaches and Geelong CBD

Sunny north facing rear yard

Great location with access to

- Ring road to Melbourne
- Surf Coast highway to Geelong CBD & Torquay
- Future Armstrong Creek town centre walking distance
- Future Medical centre - with Epworth Waurn Ponds already open
- Public transport - Waurn Ponds train station and buses

Price : \$ 475,000
Land Size : 448 sqm
View : <https://www.avenuefive.com.au/sale/vic/geelong-district/mount-duneed/residential/land/6825785>



Sam Parsons
5241 6968



Hayley O'Shannessy
5241 6968