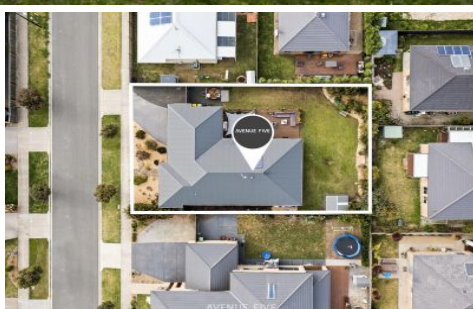


AVENUE FIVE



5 Creekward Drive Armstrong Creek VIC

4  2  2 

Enjoy the benefits of living in this great location complete with side access for boats, cars or caravans. Located in award winning Warralily estate, walking distance to ovals, schools and creek paths your new lifestyle location starts here.

Optimal positioning as the home fills with natural light from the Northern sun, the open plan design seamlessly flows from one room to the next. The kitchen featuring a walk in pantry and stone benches flows through to the meals and spacious living area.

Direct access from the kitchen/living space, the decked outdoor alfresco and large, beautifully maintained backyard makes entertainment options endless for family and friends.

Land Size : 640 sqm

View : <https://www.avenuefive.com.au/lease/vic/geelong-district/armstrong-creek/residential/home/6766375>



Elisha Jackman
5241 6968

