




AVENUE FIVE



6628/ Botanical Drive Mount Duneed VIC

3  2  2 

An established community, with everything to offer.

These homes are Park fronted with a green space outlook

Located 10km South of Geelong CBD, Armstrong is located in the fast-growing suburb of Mt Duneed. Everything you need is within reach, such as Armstrong Creek Town Centre and a future proposed community centre. Porter Davis Hampton inspired external designs with the weatherboard look and a gabled roof is what sets the Hamptons beachside homes apart, and these are located accordingly within 15 minutes to world class beaches.

Porter Davis Medium density
10% deposit balance of 90% at completion

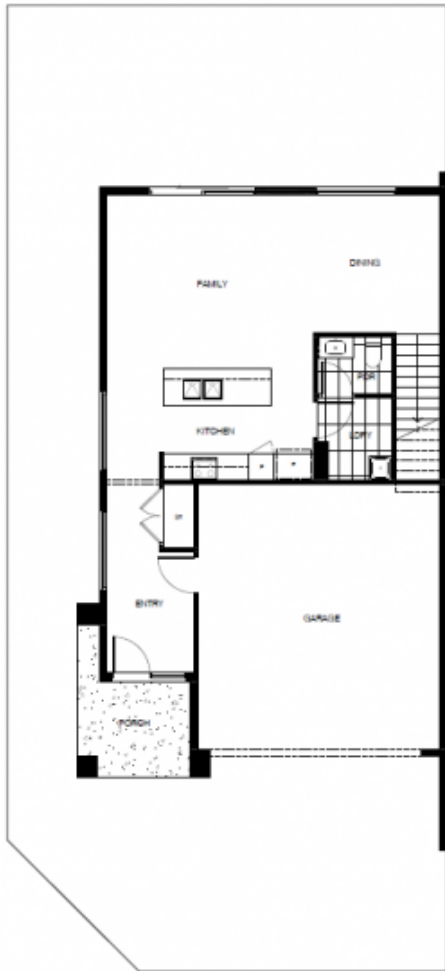
Price : \$ 595,000
Building Size : 19 sqm
Land Size : 215 sqm
View : <https://www.avenuefive.com.au/sale/vic/geelong-district/mount-duneed/residential/townhouse/6733760>



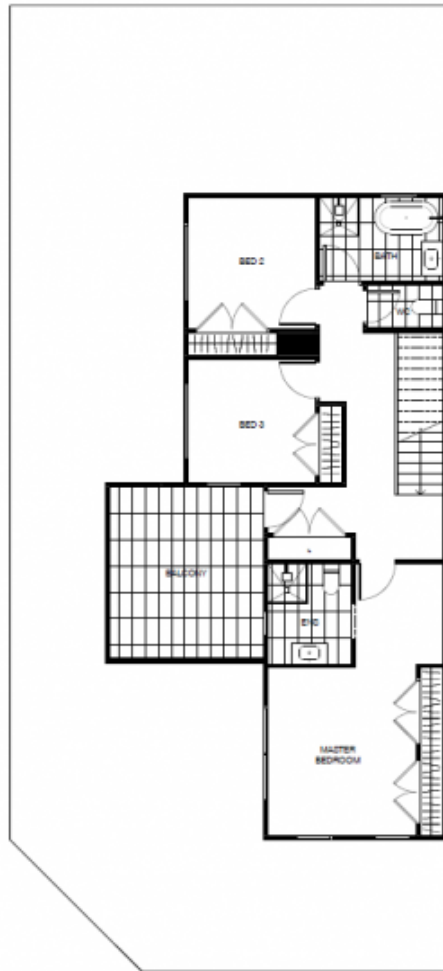
Sam Parsons
5241 6968



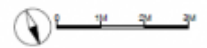
Luke Eustace
5241 6968



GROUND FLOOR PLAN



FIRST FLOOR PLAN



LOT 6628