

AVENUE FIVE



Cumulus Highton HIGHTON VIC

2 2 2

Buy now and reap the rewards

Only 10% deposit, achieve further Capital growth over 12 months while you wait for your home or Investment to be completed.

Located a short drive to Epworth Hospital, Deakin University and Waurm Ponds shopping centre this is perfect for first home buyers, Investors or downsizers.

Everything is on your door step and available at the Waurm Ponds Shopping Centre, speciality stores, supermarket, library, bunnings close by and Leisurelink pool / gym.

7 - star energy rated Boutique Town homes

Price : \$ 645,000

View : <https://www.avenuefive.com.au/sale/vic/geelong-district/highton/project/townhouse/6604035>



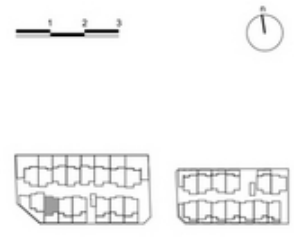
Sam Parsons
5241 6968

GROUND FLOOR

FIRST FLOOR

Site A LOT 10

Lot Area	122 m ²
Total House Area (inc. First floor balcony)	166 m ²
Yard Area	41 m ²
Car	1
Bed	2
Bath	2
PDR	1



c u m u l u s

t o w n h o m e s

Basin Rise, Highton, Vic.

The information contained in this document is provided in good faith and is not intended to constitute an offer of any financial product. It is intended to provide information only and does not constitute an offer of any financial product. It is intended to provide information only and does not constitute an offer of any financial product. It is intended to provide information only and does not constitute an offer of any financial product.