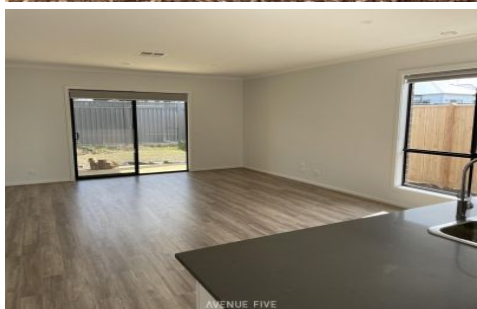


AVENUE FIVE



66 Gravity Drive Mount Duneed VIC

4 2 2

This home has just completed construction and includes 4 generous bedrooms, master with walk in robe and ensuite with double basin.

Open plan living with glass doors overlooking rear under cover entertaining.

The kitchen offers 900ml cooking, dishwasher and walk in pantry.

A second living area at the entrance offers a retreat from the children or a great working from home space.

The central family bathroom offers shower, bath and separate laundry and toilet facilities.

With internal access from remote double garage, ducted heating and evaporative cooling throughout. This home is sure to tick all the boxes.

Please note the back landscaping has been booked and will be completed asap.

View : <https://www.avenuefive.com.au/lease/vic/geelong-district/mount-duneed/residential/house/6593943>



Elisha Jackman
5241 6968