

AVENUE FIVE



4B Corowa Court Grovedale VIC

3 2 1

(* PRIVATE INSPECTIONS, MUST BE REGISTERED, MUST BE FROM REGIONAL VIC*)

Just minutes from Waurn Ponds shopping centre, doctors and a variety of other services, this unit offers everything from location to undercover entertaining. Featuring double glazing, split system heating & cooling and a sky light in the living area, this home provides warmth as well as an abundance of natural light.

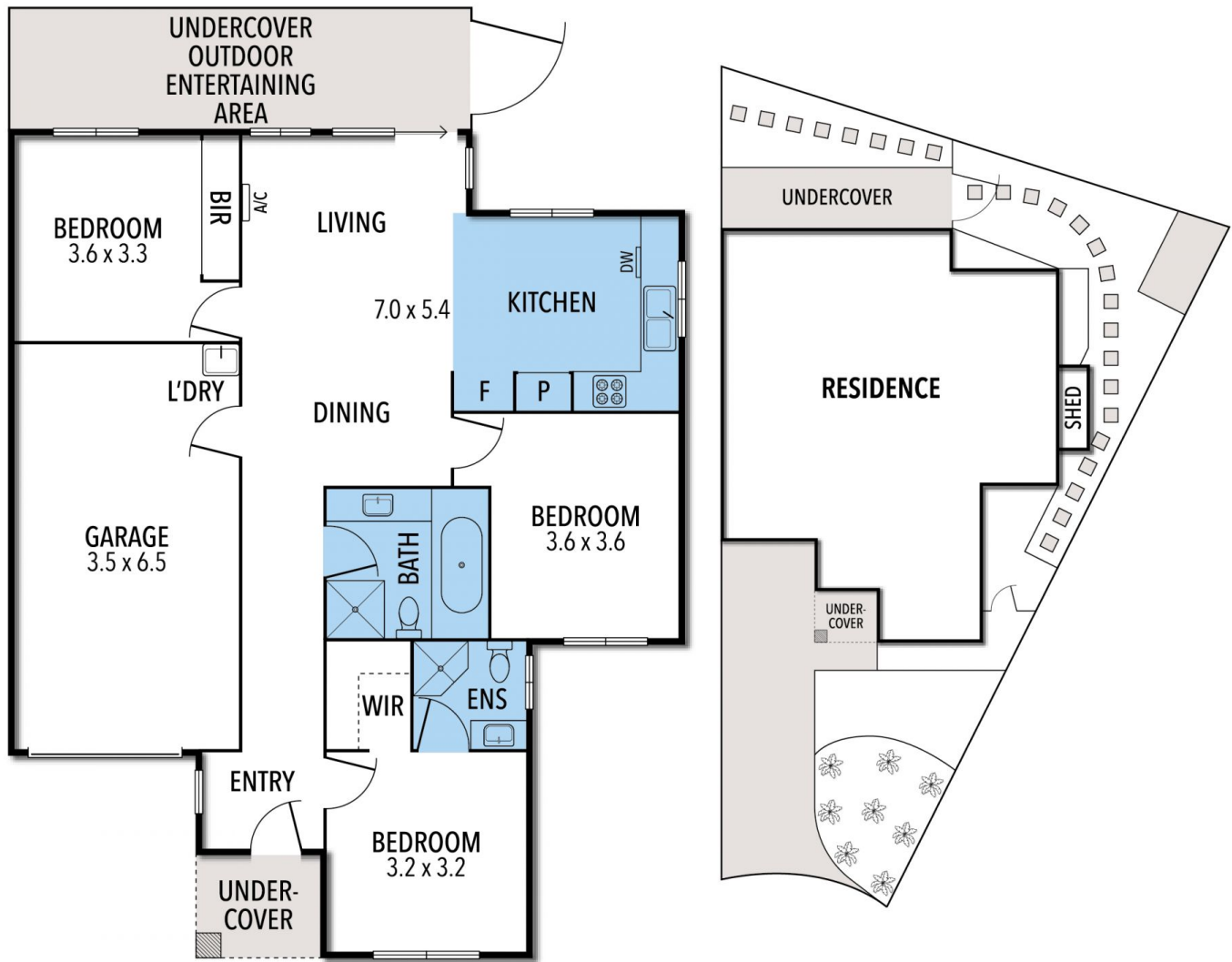
3 bedrooms, with the master offering an ensuite a walk-in robe and blackout roller blinds. Bedroom 2 offers built-in robes whilst the third bedroom has a wardrobe ready to go, and the shared main bathroom features a shower and bath and has never been used.

The kitchen comes equipped with stone benches, gas

Price : \$ 595,000
Land Size : 245 sqm
View : <https://www.avenuefive.com.au/sale/vic/geelong-district/grovedale/residential/townhouse/6591392>



Sam Parsons
5241 6968



THE ABOVE PLAN IS AN ARTIST'S IMPRESSION ONLY, IT INCLUDES ELEMENTS THAT ARE FOR DISPLAY PURPOSES ONLY AND MAY NOT BE TO SCALE. LANDSCAPING SHOWN IS INDICATIVE ONLY. DIMENSIONS ARE APPROXIMATE.