

AVENUE FIVE



114 Sovereign Drive Mount Duneed VIC

4  2  2 

Positioned in this award winning community and most sought after locations within walking distance to Armstrong creek town centre , Armstrong Park, over the road from sporting ovals, club Armstrong access, Mirapoa primary school and a short drive to some of the regions most pristine world class beaches.

Street appeal welcomes you with beautiful features including tiled floor coverings, increased ceiling height , 3 living areas, sunny north/ west facing rear yard, corner block with potential side access by adding gates.

Open plan living and kitchen is the heart of this home with stone bench tops, overhead cabinetry, walk in pantry and study nook to work from home.

Ground floor - Entertain with large open plan living and

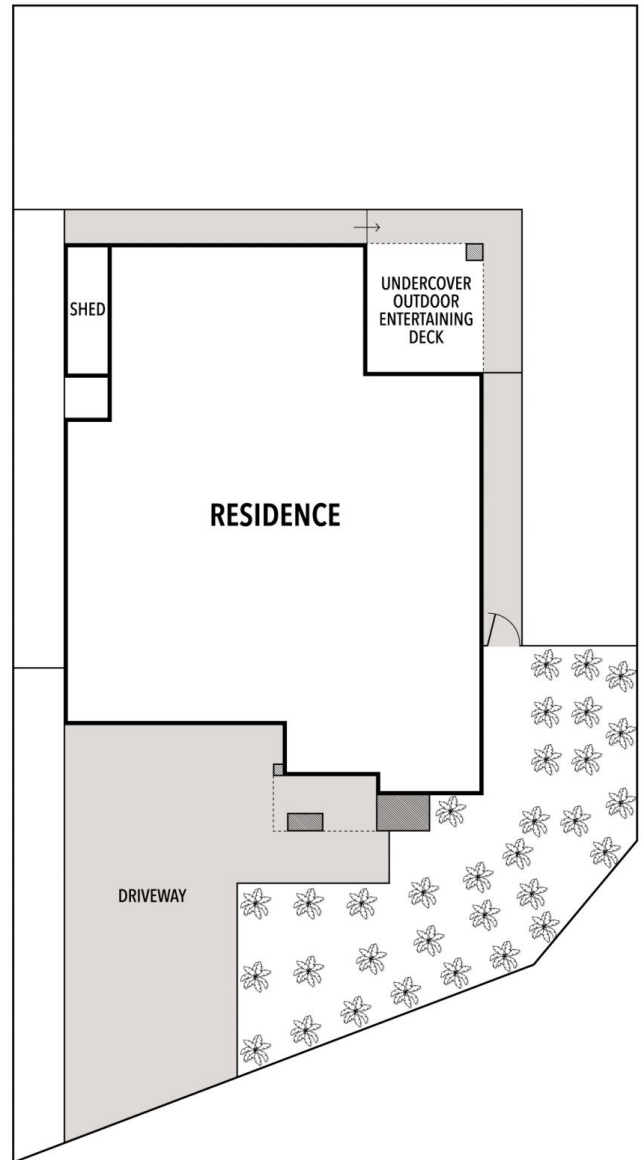
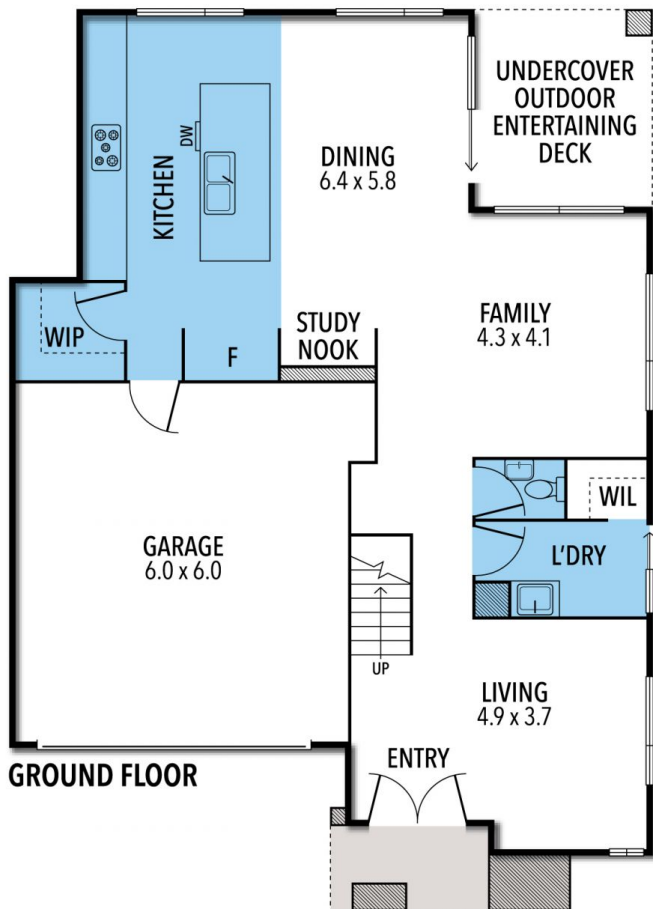
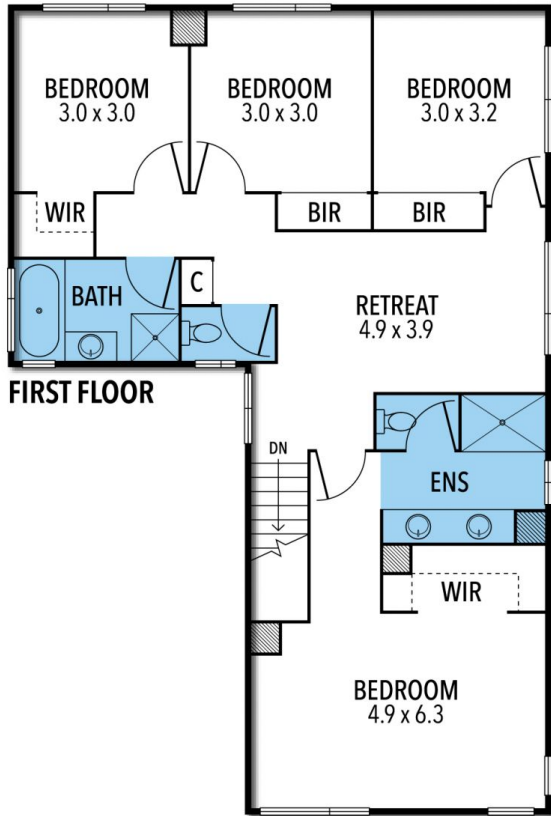
Price : \$ 725,000
Building Size : 28 sqm
Land Size : 427 sqm
View : <https://www.avenuefive.com.au/sale/vic/geelong-district/mount-duneed/residential/house/6409432>



Sam Parsons
5241 6968

<https://www.avenuefive.com.au>

114 SOVEREIGN DRIVE, MOUNT DUNEED



THE ABOVE PLAN IS AN ARTIST'S IMPRESSION ONLY, IT INCLUDES ELEMENTS THAT ARE FOR DISPLAY PURPOSES ONLY AND MAY NOT BE TO SCALE. LANDSCAPING SHOWN IS INDICATIVE ONLY. DIMENSIONS ARE APPROXIMATE.